

# CA International Cabinet Construction

## SHELVES

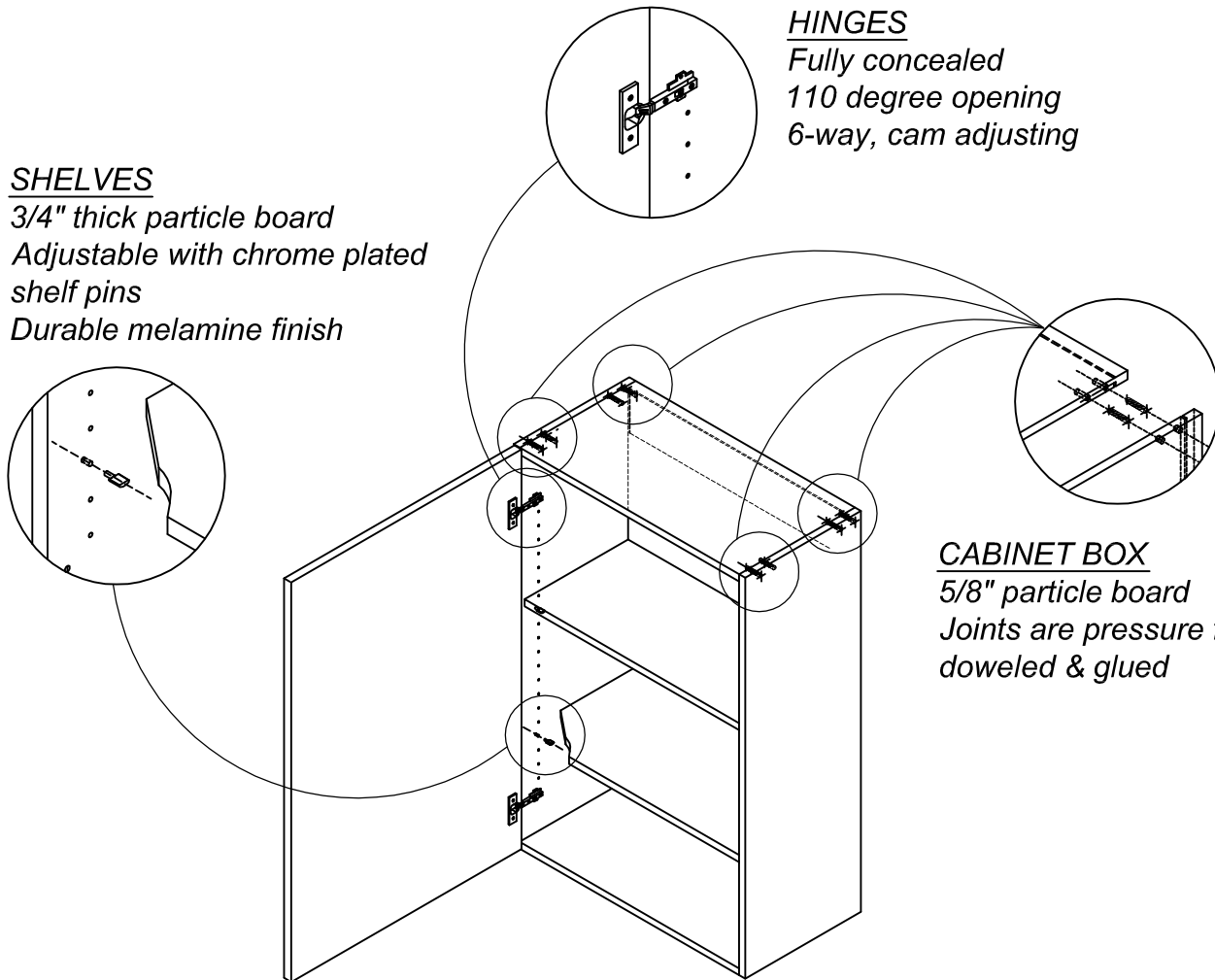
*3/4" thick particle board  
Adjustable with chrome plated  
shelf pins  
Durable melamine finish*

## HINGES

*Fully concealed  
110 degree opening  
6-way, cam adjusting*

## CABINET BOX

*5/8" particle board  
Joints are pressure fitted,  
doweled & glued*



## UPPER CABINET

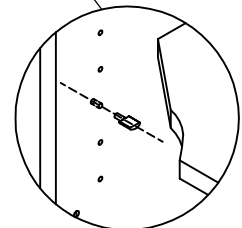
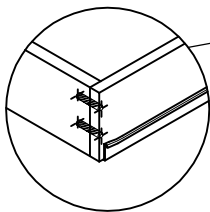
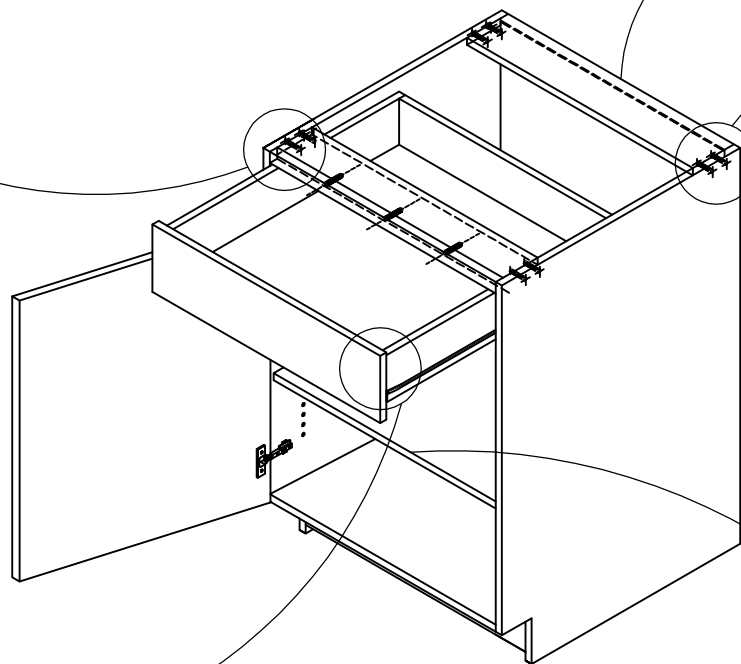
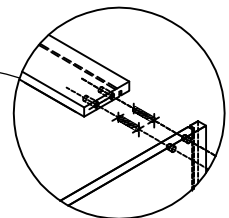
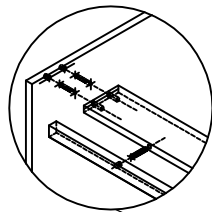
# CA International Cabinet Construction

## CABINET BOX

*5/8" particle board*

*Joints are pressure fitted,  
doweled & glued*

*5/8" hanging rails  
top and bottom*



## DRAWER BOX

*1/2" particle board*

*Dowel joint construction*

*Self-closing epoxy guides*

*75lb load capacity*

## SHELVES

*3/4" thick particle board*

*Adjustable with chrome plated  
shelf pins*

*Durable melamine finish*

## BASE CABINET